

**2 Bed
Apartment
located in**



Flat 2, Laugan House
Laugan Walk
London
SE17 2EA



£2,150

****Virtual Tour Available check below****

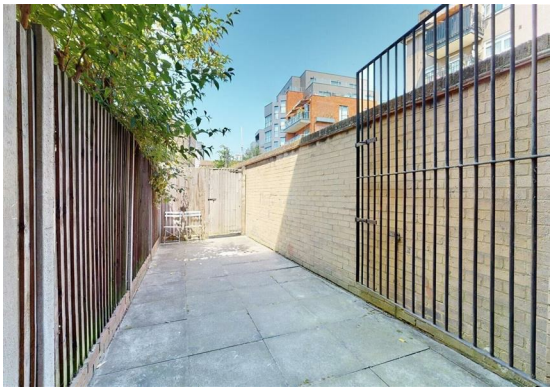
Sincere Lettings are delighted to present this modern Two-bedroom Ground floor flat located on Laugan Walk, Walworth.

Situated on the Ground floor and offering 871sq ft of living space, this bright apartment benefits from large windows, high ceilings, and ample storage throughout. The property also benefits from a north-facing private terrace.

Key features include:

- *Ground floor
- *Spacious open-plan kitchen/living area
- *two double bedroom
- *Modern bathroom
- *Washer & freezer included
- *Student friendly
- *Furnished
- *Garden

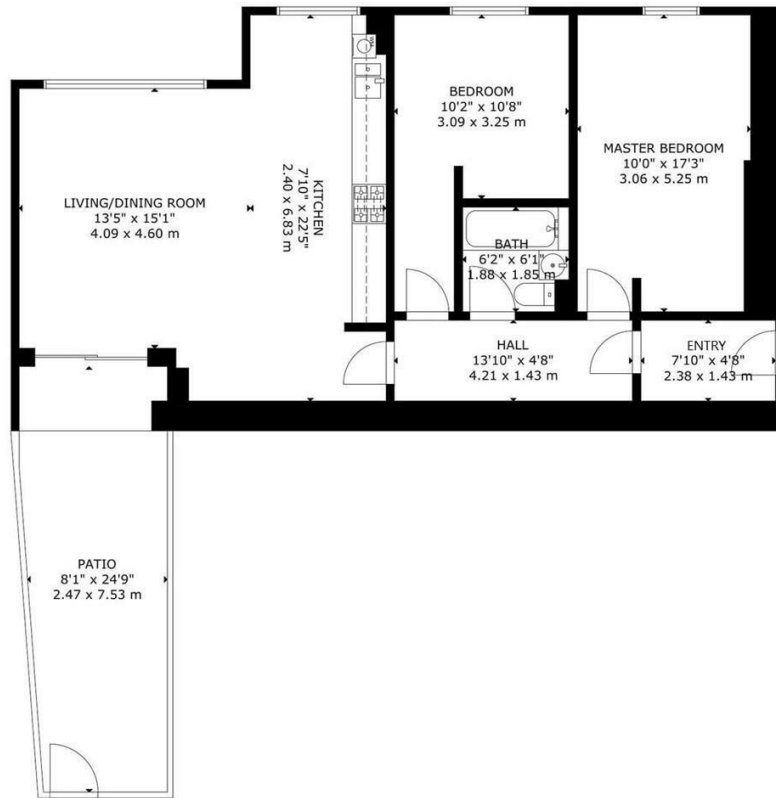






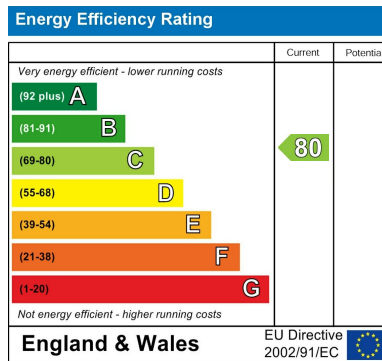
Flat 2, Laugan House Laugan Walk, London, SE17 2EA





GROUND FLOOR

GROSS INTERNAL AREA
 TOTAL: 81 m²/871 sq ft
 GROUND FLOOR: 81 m²/871 sq ft
 EXCLUDED AREA: PATIO: 18 m²/199 sq ft
 SIZE AND DIMENSIONS ARE APPROXIMATE, ACTUAL MAY VARY.



DIRECTIONS

CONTACT

252 Hoe Street
 London
 E17 3AX

E: admin@sincerelettings.co.uk

T: 02085200425

www.sincerelettings.co.uk



sincere
 PROPERTY SERVICES